

NEI

The NEI Executive Council Associate Bios

July, 2022

The National Educators' Institute at Bermuda College



BUILDING A COLLECTIVE CULTURE OF LIFE WIDE LEARNING



Dr. Duranda Greene
Former President
Bermuda College

Dr. Duranda Greene has served through the ranks of higher education – as a faculty member, department chair, dean, special assistant to the president, and finally as the Bermuda College president (2007 - 2023). She is also a proud alumna of the College.

Dr. Greene is one of the Executive Council Associates of the National Educators' Institute (NEI), which comprises a diverse team of education professionals from public and private schools, Bermuda College, and community members. Executive Council members serve as ambassadors, networking, and marketing advocates utilising their considerable skill sets in support of the NEI vision in the community.

The NEI is Dr. Greene's vision. It was and remains her conviction that the NEI will be a centre of professionalism where Bermuda's education professionals can gather to have free-range conversations, pose exigent questions, and generate innovative ideas for the enhancement of the educational landscape in Bermuda, and for the ultimate benefit of Bermuda's students.



Ru-Zelda Severin
Interim Executive Director
National Educators' Institute

Ms. Ru-Zelda Severin serves as Interim Executive Director of the National Educators' Institute at Bermuda College. She has been a guiding force from its conception through its development. At Bermuda College she has been a senior lecturer of Music and Education. She chaired the BC Journal Committee, which produced Bermuda's only peer reviewed journal of education. She has also been chair of the Faculty Professional Learning committee.

Ru-Zelda helped to develop a Classical Liberal Arts school in Massachusetts where she served as middle and high school principal and guided the curriculum development and a shift to constructivist pedagogies. She has conducted many workshops on pedagogy, classroom management, and education technology.

She has served as Deputy Chair of the Board of Education, a Director of the African Heritage Diaspora Trail Board, and as a Trustee of the National Museum of Bermuda. Formerly on the Governance Committee for public school transformation, she now sits on the Education Authority Working Group and Systems Leadership Working Group for education reform, as well as the Education Committee of the National Museum of Bermuda.

Ru-Zelda is honoured to work alongside the high-quality educators and community members that form the NEI team.



BUILDING A COLLECTIVE CULTURE OF LIFE WIDE LEARNING



Dr. Holly R. Richardson
Executive Council, Chair

Dr. Holly R. Richardson joined the Bermuda Public School System in 1995 and has served at Paget Primary School, Port Royal Primary School, and now, Prospect Primary School. She has been a principal for 20 years, with her first principalship being at Port Royal Primary School. She then moved to her current post at Prospect Primary School in 2015. Holly also serves as the divisional chairperson for division six of the Bermuda Public Services Union, which represents the Bermuda Public School Principals.

When Holly first joined the National Educators' Institute, as a Public-School Leader, she was associated with the Research and Scholarship Tier. In November of 2021, she was elected as the inaugural Chairperson of the Executive Council of the Institute. Holly looks forward to the work in not only building the NEI, but the deeper national imperative of building our education community as the NEI 'builds a collective culture of life-wide learning'.



Dr. John E. Duncan
Executive Council, Deputy Chair

Since 2016 Dr. John E. Duncan has worked for the Bermuda Public School System as Program Director (Acting), at Success Academy, an alternative program for male middle and secondary students. Previous posts within the system include M3 Team Leader at the middle school level, Deputy Principal at the primary level, and Mentor Teacher.

Dr. Duncan joined the National Educators' Institute as a Public-School Leader and was associated with the Brothers as Scholars Tier. In November of 2021, his NEI colleagues elected him Deputy Chair of the Executive Council.



BUILDING A COLLECTIVE CULTURE OF LIFE WIDE LEARNING



Janice Outerbridge
Executive Council, Treasurer

Mrs. Janice Outerbridge is Head of the Children's House and Lower Primary Montessori Programmes at Somersfield Academy. She initially began at Somersfield Academy as a Montessori classroom teacher, then Curriculum Coordinator, Division Head of Children's House, Division Head of Children's House & Lower Primary, and Head of Primary. She has also served as Acting interim Principal.

Janice joined the National Educators' Institute as a Private – School Leader and served as an associate of the Pedagogy and Practice Tier. She became the inaugural Treasurer of the Executive Council in November 2021.



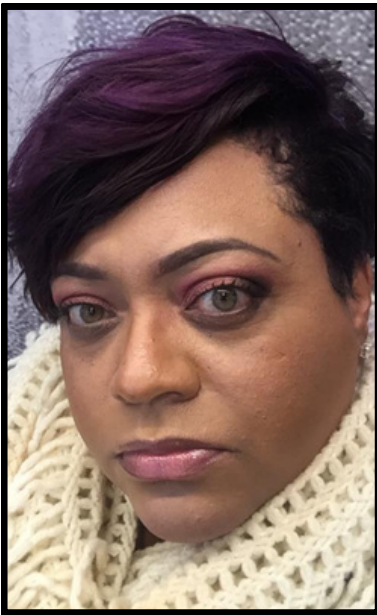
Llewellyn Simmons,
Social Emotional Cultural Competence
Associate

Dr. Llewellyn Simmons is currently the Director of Academics (2008 to Present), for the Bermuda Public School System. As a former home and school guidance counsellor, Social Science teacher, Education officer for Social Studies, and Assistant Professor, his areas of authority are in Leadership Development, Leadership training, Emotional intelligence, Social Emotional literacy, Curriculum Design and Development, School Redesign, Foundations for Critical Thinking and Decolonized Discourses in teaching and learning. He is a former Assistant Professor at the University of Dayton, Department of Education Leadership, in Ohio.

Dr. Simmons serves on the Social Emotional Cultural Competency (SECC) Tier of the NEI. As a partner and Senior Fellow for the Applied Centre of Emotional Literacy, Research & Leadership (ACELLR) and former secondary school educator he brings his professional teaching and counselling background, to this NEI servant leadership role.



BUILDING A COLLECTIVE CULTURE OF LIFE WIDE LEARNING



Tamicia Darrell
Pedagogy and Practice Associate

Mrs. Tamicia Darrell is the Acting Principal at Northlands Primary School and is a former Deputy Principal at West End Primary School. For three years, she served as a member of the Standards-Based Grading Steering Committee. Their primary role was to assist in transitioning the Bermuda Public School System into a Standards-Based Education System.

Presently, Mrs. Darrell has the privilege to serve as the Chairperson of The Bermuda Educators Council (BEC). There, she works alongside several dedicated volunteer educators committed to establishing, promoting, and sustaining teaching standards and professional conduct in and amongst Bermuda's educators.

As an NEI Executive Council member, Tamicia represents the interests of the BEC. She is an associate of the Pedagogy and Practice Professional Learning Team. To that experience she brings her perspective as the Chairperson of the BEC's Professional Learning Committee and as a private professional developer.



Lindsey Sirju
Social Emotional Cultural Competency Associate

Lindsey Sirju is the Co-Founder and Deputy Head of School for Bermuda Centre for Creative Learning. Previously, Lindsey taught in a special education classroom with children ages 2 to 14. She has also served as an Education Therapist for children ages 4 to 16 with language-based learning disabilities, ADHD, Autism, cognitive and developmental delays, executive functioning and social communication deficits, anxiety-based disorders, as well as children with physical and mental disabilities.

Lindsey has provided professional development workshops in Bermuda, for teachers, therapists, parents at local schools, the Learning Disabilities Association of Bermuda, and the Ministry of Health. She is currently a board member of the Learning Disabilities Association of Bermuda.

Lindsey serves as a Private School Leader on the NEI Executive Council and is an associate of the Social Emotional Cultural Competency Tier.



BUILDING A COLLECTIVE CULTURE OF LIFE WIDE LEARNING



Ian Cameron
Brothers as Scholars Associate

Mr. Ian Camron is an Investigator at the Information Commissioner's Office. He is also owner of the Griot Ltd., and online afro-centric bookstore. Prior to moving the Griot online, Ian facilitated educational classes on African history, African spirituality, and holistic healing practices from the Hamilton based store. Ian is certified in African Holistic Medicine, Counselling, Yoruba spiritualism, Transcendental Meditation and other metaphysical and holistic modalities. His expansive expertise extends to criminal justice, sociology, graphic design and art. He currently sits on the board of MASC Men's Counselling Services amongst other private entities.

Ian brings his knowledge and expertise in counselling, African history, project management, with development and operation of programs, especially for at risk youth and young black men, to the NEI Executive Council.



Kenneth Caesar
Brothers as Scholars Professional Learning Team Leader

Mr. Kenneth Caesar is the Principal of CedarBridge Academy. He also sits on the Board of Parent Resource Institute for Drug Education (PRIDE) Bermuda. Prior to becoming the principal of CedarBridge Academy, he served as the Deputy Principal and Principal of Sandys Secondary Middle School. Recently he was the Chairman of the Sandys Parish Council for two years and a member for seven years.

Mr. Caesar sits on the National Educators' Institute Executive Council as the Tier Leader for Brothers as Scholars.



BUILDING A COLLECTIVE CULTURE OF LIFE WIDE LEARNING



Ms. Anastasia Smith returned to Bermuda in 2019 and commenced a Science educator post at Saltus Grammar School. Prior to returning home she was a Science teacher for Guilford County Schools, Greensboro, NC. Amongst other things, Ms. Smith is highly skilled in the Project Based Learning method of teaching.

Ms. Smith sits on the NEI Executive Council as Professional Team Leader of the Pedagogy and Practice Tier.

Anastasia Smith
Pedagogy and Practice Professional Learning Team, Leader



Samantha is a Certified Professional Coach and author. She has worked in the non-profit sector at Shift (formerly PRIDE Bermuda). In the early years, Samantha was Assistant Programme Coordinator and eventually became the Programme Supervisor, responsible for developing and delivering substance abuse prevention and social emotional learning programmes, presentations, trainings and supervising staff and programme facilitators. Always ready for a challenge, Samantha took on the role of Brand and Communications Manager.

Samantha is a community representative on the NEI Executive Council and is the leader of the Social Emotional Cultural Competency Tier. The team works develop offerings that support the Social Emotional Development of education professional. Samantha is passionate about the work of The NEI and is always happy to lend her support.

Samantha Smith
Social Emotional Cultural Competency
Professional Learning Team, Leader



BUILDING A COLLECTIVE CULTURE OF LIFE WIDE LEARNING



Therese Bean
Research and Scholarship
Professional Learning Team, Co-Leader

Ms. Therese Bean is Head Teacher of Performing Arts, Film and Media, and Creative Arts at Saltus Grammar. Ms. Bean is also the founder of Bermuda Youth Film Festival. Prior to her 2017 arrival in Bermuda, Therese was quite active in Australia. Among other things she served as the Coordinator of Drama and Film, Production Director, and Head of House at Rosebank College, Senior Examiner for the New South Wales (NSW) Board of Studies, Executive Member of the NSW Drama Committee, and Associate Lecturer in Acting at The Sydney Theatre School.

Therese holds graduate diplomas in extensive and broad areas of education. She brings this knowledge to bear at the NEI in her role as Research and Scholarship Tier Co-Leader.



Kelly Reeves
Research and Scholarship,
Professional Learning Team, Co-Leader

Ms. Kelly Reeves is Faculty Head of Science at Warwick Academy. Along with her teaching responsibilities Ms. Reeves is designing an innovation and collaborative work space for all staff, which include robotics, augmented reality, and more. She is a qualified Critical Friends Group Coach and is the creative co-founder and organiser of the Bermuda Leads Leadership Summit Series.

Prior to her employment as Warwick Academy, Kelly was Head of Science and Psychology at Saltus Grammar School.

Kelly sits on the NEI Executive Council as Research and Scholarship Tier Co-Leader.